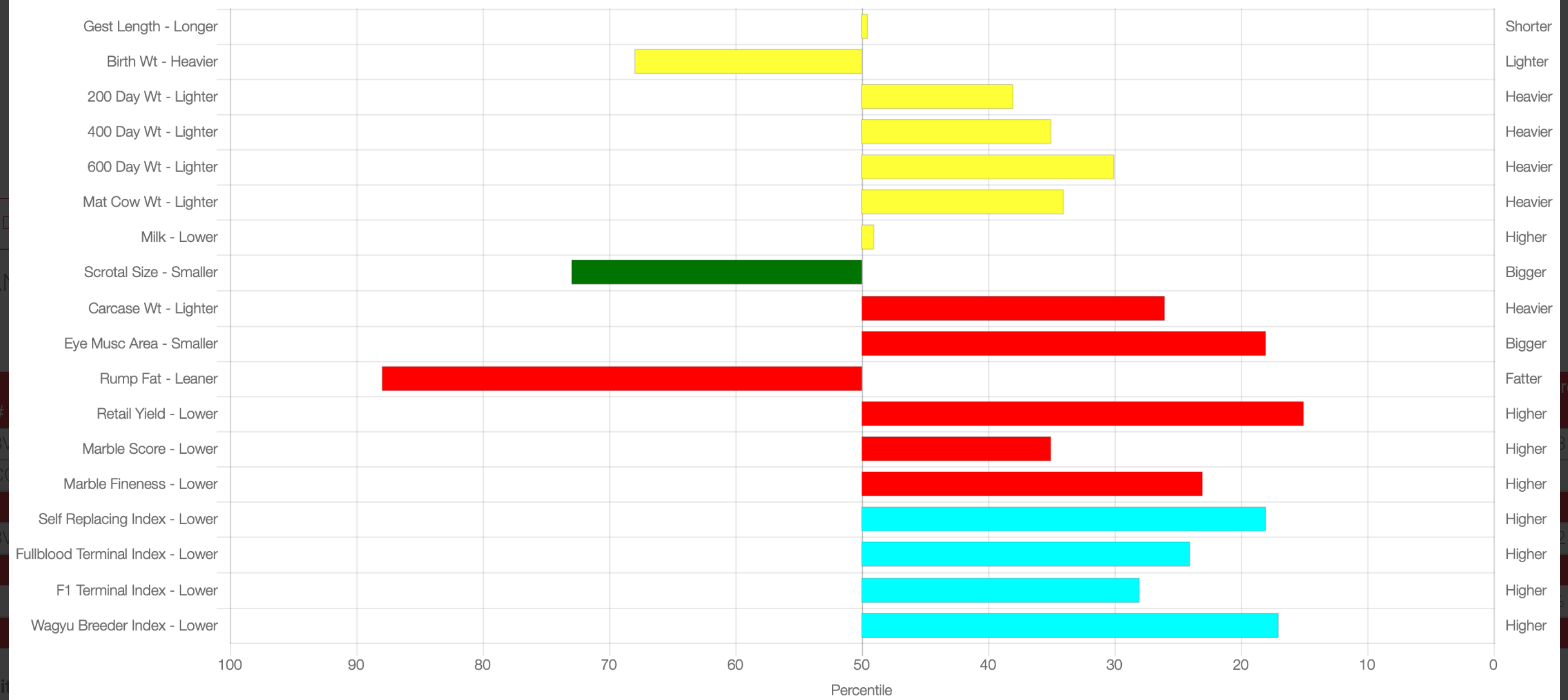


### EBV Percentiles for TXPFSJ12 TXP SUMO J12 (ET)

Birth Growth Fert Carcase Indexes



50th Percentile is the Breed Avg. EBVs for 2021 Born Calves

[Graph Explanation](#)

Fullblood Terminal Index (\$)	+172	+137
F1 Terminal Index (\$)	+153	+124
Wagyu Breeder Index (\$)	+218	+162